



# Status of GPSE Monitoring Indicators in CFUGs of Doti District



# **Status of GPSE Monitoring Indicators in CFUGs of Doti District**

**Anu Adhikari, Radha Khadgi and Giridhar Amatya**

**IUCN Nepal**

**March 2010**



Copy right: © 2010 IUCN Nepal

Published by: IUCN Nepal Country Office

Reproduction of this publication for educational or other non-commercial purposes is permitted without prior written consent from the copyright holder provided the source is fully acknowledged.

Reproduction of this publication for resale or other non-commercial purposes is prohibited without prior written permission of the copyright holder.

ISBN: 978-9937-8222-5-1

Editing: Amit Pradhan

Design & Layout: Amit Pradhan

Available from: IUCN Nepal, P.O. Box 3923, Kathmandu, Nepal

Tel: (977-1) 5528781, 5528761

Fax: (977-1) 5536786

Email: [info-np@iucn.org](mailto:info-np@iucn.org), URL: <http://iucnnepal.org>

# Table of Contents

Abbreviations/Acronyms .....	i
List of Tables .....	ii
List of Figures .....	ii
List of Annexes .....	iii
Acknowledgements .....	iv
Background .....	1
Objective of the study .....	2
Limitation of the study .....	2
Methodology .....	2
Findings and discussion .....	2
Access and benefit sharing .....	3
Governance .....	4
Organizational development .....	6
Policy change .....	6
Conclusion .....	7
References .....	8
Annexes .....	9

## Abbreviations/Acronyms

CF	Community Forest
CFUG	Community Forest Users Group
CG	Conservation Group
EC	Executive Committee
GEWG	Gender Equity Working Group
GPSE	Gender, Poverty and Social Equity
GPSE, LG	Gender, Poverty and Social Equity, Learning Group
GSELG	Gender and Social Equity Learning Group
HHs	Household
IGA	Income Generation Activities
IUCN	International Union for Conservation of Nature
MAPs	Medicinal and Aromatic Plants
MoFSC	Ministry of Forest and Soil Conservation
MTT	Monitoring Task Team
NRM	Natural Resource Management
NTFP	Non-Timber Forest Product
P&E	Poor and Excluded
SPSS	Statistical Tool for Social Science
VDC	Village Development Committee
WPSE	Women, Poor and Socially Excluded

## List of Tables

Table 1: Number of P&E HHs without CFUG membership .....	4
Table 2: Allocation of fund to pro-poor .....	7

## List of Figures

Figure 1: Socioeconomic structure of CFUG .....	3
Figure 2: Percent of P&E receiving at least average distributed forest resources .....	4
Figure 3: P&E representation in EC .....	5
Figure 4: Representation of WPSE in key position of EC .....	5
Figure 5: Percent of P&E saying decisions made by CFUG, EC are good/very good .....	6

## List of Annexes

Annex 1: Socioeconomic information of monitored CFUGs in Doti District .....	8
Annex 2: Percent of P&E receiving at least average share of forest resources distributed .....	9
Annex 3: Representation of Women, Poor and Socially Excluded in EC .....	10
Annex 4: Equity sensitive policy/work plan and P&E responses to decisions .....	11
Annex 5: Allocation of Pro-Poor fund .....	12

## **Acknowledgements**

We are very much indebted to IUCN Nepal for providing us an opportunity and funding to conduct this research. We are also grateful to all the respondents, key informants and participants of Focus Group Discussions (FGDs) for their time and information

Thanks to Mr. Rajendra Khanal for his valuable feedback and helpful reviews. We also express our thanks to Mr. Giridhar Amatya, Program Manager, IUCN-Seti Project, Mr. Liladhar Bista and Mr. Mahesh Kathayat for their coordination and help during the field trip. Last but not the least, we express our sincere thanks to all those who has directly or indirectly helped us during the study period.

## Background

Since 2003, more than twenty five organizations had been collaborating for better mainstreaming Gender, Poverty, and Social Equity (GPSE) issues in the Natural Resource Management (NRM) sector. This collaboration has collectively strengthened the ability to measure contributions of the forest sector to national and international goals of poverty reduction and equitable development. Gender Equity Working Group (GEWG)<sup>1</sup> of Ministry of Forest and Soil Conservation (MoFSC) and Monitoring Task Team (MTT) of the Gender and Social Equity Learning Group (GSELG)<sup>2</sup> collectively initiated the work on monitoring and evaluation of GPSE issues through identification of indicators for a common GPSE indicator framework. During 2004 - 2005 a monitoring framework having eight indicators (four basic and four advanced) were developed and prioritized through a participatory process for the four change areas of MoFSC's gender vision to monitor GPSE status in the NRM sector. These indicators were piloted by various organizations during 2005 and 2006. The four basic indicators expected to be used by all stakeholders were as follows:

1. **Access and Benefit (Change area 1) indicator:** Percentage of the NRM groups with P&E receiving at least average share<sup>3</sup> of distributed forest products (e.g. fuel-wood, fodder, grass, timber and NTFP).
2. **Governance (Change area 2) indicator:** Proportionate representation in the NRM groups.
3. **Organization Development (Change area 3) indicator:** Percentage of staff/s from excluded gender, ethnic, caste and religious groups in the NRM institutions in the decision making and support levels
4. **Policy level (Change are 4) indicator:** Percentage of NRM groups with at least affirmative actions towards P&E in their new or amended policy documents (constitution, operation plans and strategic decisions)

After the identification of GPSE indicators, all the concerned stakeholders assessed these indicators in their respective program areas and finalized them. After finalizing the indicators, IUCN Nepal initiated the Gender, Poverty and Social Equity (GPSE) initiative with the support from GPSE Monitoring Task Team (GPSE, MTT) and GPSE Learning Group (GPSE, LG) in the NRM sector particularly in the forestry sector. Since then it has been working to facilitate mainstreaming gender equity and social inclusion and poverty reduction in Natural Resource Management (NRM) in Nepal.

In the first phase (2000-2006) of "*Practical Innovations for Inclusive Conservation and Sustainable Livelihoods Project*", IUCN Nepal had focused its work on Benefit Sharing, Conservation, Management and Marketing of MAPs and NTFPs in thirty four wards of ten VDCs of Doti district through active participation of NTFPs and MAPs Conservation Groups (CGs). In the second phase (2007-2009), "*Practical Innovations for Inclusive Conservation & Sustainable Livelihoods Project*", of IUCN Nepal had focused on sustainable forest management, livelihood improvement and equitable access and benefit sharing in twenty CFUGs of Doti district. This phase dealt with improving the status of targeted beneficiaries namely Women and Poor & Socially

---

<sup>1</sup> GEWG was established with the objective to organize forestry sector discussions around a MoFSC Gender Strategy. A major achievement was the GEWG's facilitation of the MoFSC Gender and Social Equity Vision process.

<sup>2</sup> GSELG is a parallel initiative by IUCN and SDC that fosters learning on gender and social equity among a broader group of stakeholders including planners and implementers of government, bilateral and multilateral organizations and civil society working in the NRM sector in Nepal. The group has created forums to share experience and develop joint initiatives based on priorities set by the participating institutions.

<sup>3</sup> Working definition of Average Share of NR: Total of natural resource (NR) products distributed divided by number of households in NRM groups

Excluded Households (WPSE HHs) on equitable access and benefits sharing of forest resources with a focus on policy promotion and application, CF governance, MAPs/NTFPs Management and marketing and conservation awareness.

In the year 2006, IUCN Nepal conducted a pilot test study for GPSE monitoring indicators in seven CFUGs of Chhatiwan, Ghanteshwar and Gadsera VDCs. The study showed that the elites and the upper castes are representatives of executive committee and actively involved in controlling the forest management activities without involving the women, poor and socially excluded members of the society. Likewise, representation of women in executive committee was not satisfactory. There was a very weak representation of women, poor and other socially excluded households (Dalits and Janajatis) in the key positions of the CFUGs ECs. Furthermore, IUCN Nepal conducted testing of GPSE monitoring indicators in twenty one CFUGs (10 and 11 CFUGs in 2007 and 2008 respectively) of project working area<sup>4</sup>. Testing of GPSE monitoring indicator was conducted in a total of 1873 households.

## **Objectives of the study**

The main objective of the study was to compare the status of GPSE monitoring indicators data over the years in NRM.

## **Limitation of the study**

This study has tried to compare the progress on CFUGs with respect to GPSE monitoring indicators data and the data were collected from CFUGs in two different years. But the data were not taken from the same CFUGs in two different years i.e. data were not taken in the year 2008 from those CFUGs whose data were collected in the year 2007. So, the study could not compare the data of same CFUGs. Therefore, the data interpreted here may not give the exact scenario and may just provide indicative results. Apart from this the study was limited in to just a few of the CFUGs in Doti district.

## **Methodology**

This study was conducted with the data collected from twenty one different CFUGs in 2007 and 2008. The data gathered were based on the GPSE monitoring indicator guidelines. For the data collection purpose the GPSE monitoring forms were used and the information was compiled from monitoring forms collected from IUCN Nepal. The compiled data were entered into a computer program i.e. Statistical Package for Social Scientists (SPSS) and were analyzed by using the simple descriptive statistics. After the completion of data entry and analysis the report was prepared based on that information.

## **Findings and discussion**

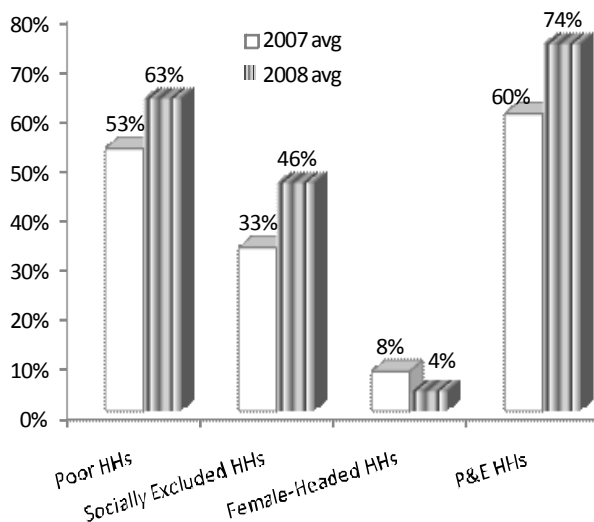
*Socio Economic Characteristics of CFUGs:* The data were collected from twenty one CFUGs in the year 2007 and 2008. Among them, ten were from Chhatiwan VDC, followed by three from

---

<sup>4</sup> Chhatiwan, Ghanteshwor, Laxminagar, Gadsera and Nirauli VDCs

Ghanteshwor, three from Laxminagar, three from Nirauli and two from Gadsera. The average households were 91. At CFUG level, it was divided into two category based on number of HHs. Eight out of twenty-one CFUGs had more than 100 HHs and the remaining CFUGs had less than 100 HHs. Dilasaini CFUG had the highest number (236) of HHs while Kafalkatte CFUG had the lowest HHs (22) (Annex 1).

High number of HHs fell under the Poor and Excluded (P&E) category. In the monitored CFUGs, 60 percent HHs were in the Women, Poor, Socially Excluded (WPSE) category in the year 2007 and it was 74 percent in 2008. The number of WPSE HHs was varying from one CFUG to another. All members of Parsuram CFUG belonged to P&E category while only 31 percent HHs belonged to P&E category in Kaphalada-Raniban CFUG. Similarly, looking into the wellbeing ranking, 53 percent of HHs fell under the poor category in 2007 while it was 63 percent in 2008 (Figure 1). It was highest in Navadurga and lowest in Kaphalada- Raniban CFUG having 83 percent and 28 percent of HHs in poor category respectively.



Likewise, 33 percent of HHs fell in the socially excluded category in 2007 while it was 46 percent in 2008. The percentage of socially excluded was 89 percent in Parsuram CFUG while the lowest was four percent in Bhagawoti "B" CFUG. Eight percent HHs were led by female in 2007 while it was only four percent in 2008. Ranipokhari CFUG had the highest (22%) percentage of female-headed<sup>5</sup> HH while Tribeni and Malika CFUGs have none (Figure 1). From the analysis we can say that participation of WPSE increased in the year 2008 as compared to 2007. This may be the effect of GPSE activities in the area.

Figure 1: 2008: Chemical Structure of CFUGs

**Access and benefit sharing:** The basic indicator for measuring access to and benefit sharing from the forest resources was "percent of NRM<sup>6</sup> groups with P&E<sup>7</sup> receiving at least average share<sup>8</sup> of distributed forest products (e.g. fuelwood, fodder, grass, timber and NTFPs)"<sup>9</sup>.

From the analysis it was found that access to and benefits from forest resources had increased in the year 2008 as compared to year 2007. If we compare the average share of fuel wood received by P&E HHs in the year 2007 and 2008 we find that it had increased in the year 2008 i.e. from 45 to 54 percent. Similarly, the average share of thatch grass received by P&E had increased from 40 to 43 percent, grass from 44 to 47 percent, leaf litter from 31 to 39 percent, timber from six to 14 percent and medicinal plants from eight to 20 percent in the year 2008 in comparison to the year 2007. The

<sup>5</sup> women-headed HH - lead beneficiary being women

<sup>6</sup> NRM - here is defined to include CFUG HH

<sup>7</sup> P&E – Poor and Excluded - includes women, women and men of economically poorest households, Dalit, disadvantaged Janajati and non-Dalit caste groups

<sup>8</sup> Average share - Total of natural resource products distributed divided by number of HHs in NRM group

<sup>9</sup> GPSE 2007; Monitoring Gender, Poverty and Social Equity (GPSE) in Natural Resource Management: A Pilot Initiative of the GPSE Learning Group and the Gender Equity Working Group of the MoFSC.

amount of average share was varying among different CFUGs (Annex 2). From the analysis it was found that the percentage of P&E HHs receiving at least average share of distributed forest resources had increased in the year 2008. The reason for increase in the access and benefit sharing of forest resources may be because of the increment in the level of awareness in CFUGs, ECs and General Members from different CFUG activities.

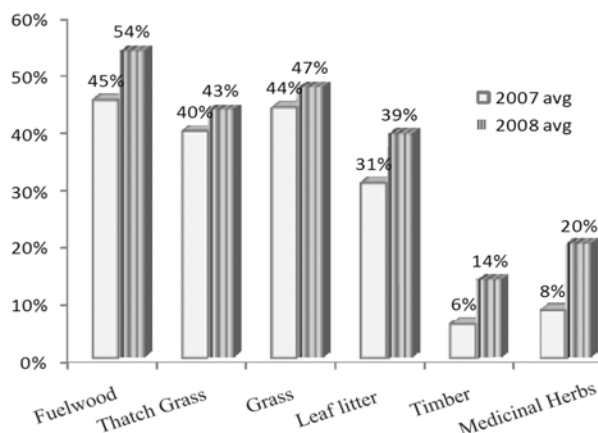


Figure 2: Percent of P&E receiving at least average distributed forest resources

The advanced indicator to measure the access and benefit sharing is “Percent of P&E living within the area covered by CFUG, who have not taken CFUG membership”<sup>10</sup>. Lower the percent, higher is the access and benefit sharing.

The study showed that there was still some HHs without membership of CFUG living within the area covered by CFUG. The percent of HHs living without the membership of CFUG have slightly increased in the year 2008 as compared to year 2007 i.e. from 12 to 18 (Table 1). Out of twenty-one, seven (33%) CFUGs still have some P&E members left which needs to be included in CFUG. Most of the non-members of P&E HHs are immigrants and descendents of former immigrants and some of them most will probably move out of the area in the near future as indicated in the monitoring forms.

Table 1: Number of P&E HHs without CFUG membership

Year	P&E HHs without CFUG Membership	
	Number	Percent
2007 avg	12	2
2008 avg	18	2

Source : GPSE monitoring 2007 & 2008

**Governance:** The basic indicator for measuring the governance was "proportionate representation of Women and P&E members in NRM groups". Equitable Governance refers to fair and balanced participation in decision-making at all levels in the forestry sector by all individuals and groups irrespective of their gender, caste, class and ethnicity<sup>11</sup>. In this analysis, it was measured by the percent of women and P&E group representation in EC and key positions<sup>12</sup>.

<sup>10</sup> GPSE 2007; Monitoring Gender, Poverty and Social Equity (GPSE) in Natural Resource Management: A Pilot Initiative of the GPSE Learning Group and the Gender Equity Working Group of the MoFSC.

<sup>11</sup> GPSE 2007; Monitoring Gender, Poverty and Social Equity (GPSE) in Natural Resource Management: A Pilot Initiative of the GPSE Learning Group and the Gender Equity Working Group of the MoFSC.

<sup>12</sup> Key positions include President, Treasurer and Secretary.

**P&E representation in EC:** From the analysis it was found that all the CFUGs have representation of WPSE groups in EC. The representation of P&E group had increased from 62 percent in 2007 to 75 percent in 2008. Similarly, representation of women in EC had slightly increased in the year 2008 i.e. from 30 percent in 2007 to 34 percent in 2008 and all the women in EC belong to either socially excluded or fall under the category of poor. Out of 21 CFUGs, nine have at least 33 percent representation (Annex 3). Overall, all other CFUGs have proportionate representation of P&E member in EC (Figure 3) but there are exception in places like Dilasaini, Bhagwoti “B”, and Kaphalada-Raniban. This shows that the governance system of CFUG has improved a little in the project areas.

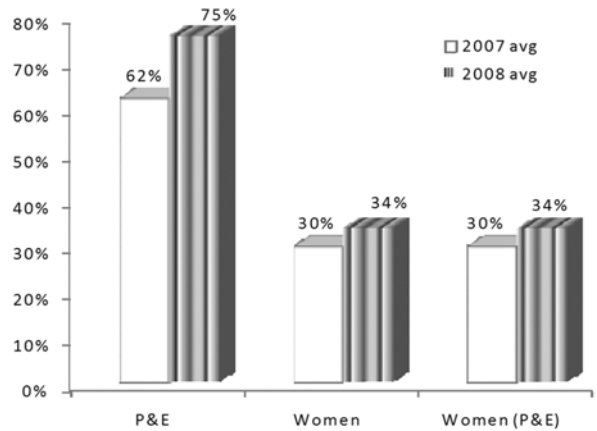


Figure 3: P&E representation in EC

**P&E representation in key positions of EC:** P&E were deprived of enjoying the equal rights as they are still behind in leadership roles. Therefore, in recent years GPSE work has been advocated in involving P&E as a major stakeholder to raise their voice for their rights.

Realizing this, GPSE work has been promoting policies for inclusion of P&E in at least one of the key positions. Due to this, there was increase in the leadership roles of P&E and was also able to hold key positions (i.e. President, Treasurer, and Secretary) in EC. Representation of P&E in key positions of EC had increased from 30 percent in 2007 to 43 percent in 2008 (Figure 4). One of the interesting facts that came from the analysis was that all the key positions of Baseni and Parsuram CFUGs was governed by P&E members. Ten CFUGs have at least one member from P&E category while four CFUGs have two members from P&E (Annex 3).

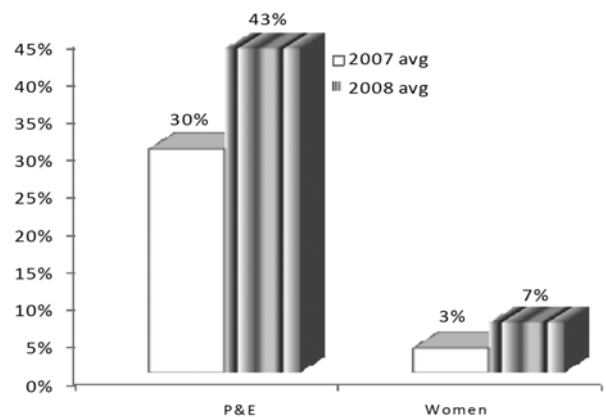


Figure 4: Representation of WPSE in key position of EC

Similarly, women's representation in key positions had also increased in the year 2008 i.e. from three percent in the year 2007 to seven percent in the year 2008 (Figure 4). Only three CFUGs<sup>13</sup> key positions of EC were represented by women members i.e. 14 percent of the CFUGs key positions of EC have women representation (Annex 3). This showed that the governance scenario of CF management is changing slowly but there still exists the dominance of elite groups. Gender and social equity in the CF management is slowly gaining momentum. This may be due to the impacts of GPSE awareness and other activities. Lack of education, confidence and workload were major hindrances for P&E to represent in EC as a member or holding key positions.

<sup>13</sup> Ranipokhari, Parsuram, and Raniban 'B' CFUGs

**CFUG and EC decisions:** Although there was increase in the representation of P&E members in the key positions of EC and also in handling the leadership roles, there were still concerns about the present representation about addressing the needs of P&E members and helping them in reducing the gender and social inequalities and thereby progressing towards poverty alleviation.

In 2007, 360 CFUG members including 31 percent (112 respondents) of P&E category were interviewed to know what they felt about the decisions made by the CFUG EC. Out of 112 P&E respondents, 75 percent

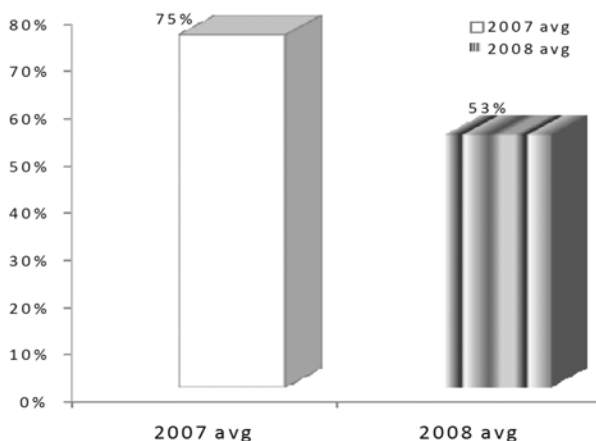


Figure 5: Percent of P&E saying decisions made by CFUG, EC are good/very good

said that the decisions made were good and very good and were in favor of them. Similarly, 483 CFUG members including 30 percent of P&E respondents were interviewed in 2008 with the same questions and 45 percent respondents believed that proper attention should be given to P&E needs and strategic decisions should be made which are favorable towards P&E members for the achievement of poverty alleviation along with the assurance of social equity (Figure 5).

**Organization development:** The basic indicator for measuring the organization development was "percentage of staff from excluded gender, ethnic, caste and religious groups in NRM institutions at decision making and support levels"<sup>14</sup>. Among the 21 monitored CFUGs, only one CFUG (Bhagawati "B" of Nirauli) has a supporting staff employed as a guard in the year 2008 but he too did not belong to P&E category. Besides this there were no staffs belonging to P&E employed in the CFUGs and this was neither monitored in the year 2007 nor 2008. So, there is a need to focus on the equity-sensitive organizational development in coming days.

**Policy change:** The basic indicator for measuring the policy changes was "percentage of NRM groups with at least ..... affirmative actions towards P&E in their new or amended policy documents (constitution, operation plans and strategic decisions)".

From the analysis it was found that among the twenty-one CFUGs, twenty (95%) have equity-sensitive policies/strategies in their constitution (Annex 4). Most of the CFUG have also amended their policy document and included affirmative actions towards P&E. There was provision of forest resource distribution at free of cost, allocation of land to P&E HHs within CF, loan-free or low-interest loans for IGA of P&E HHs and support in emergencies and help in treatment to WPSE HHs. These were some strategies included in the constitution of CFUG for equity<sup>15</sup>.

Regarding the amount of fund allocation to the pro poor group, it was found that there was a decrease in the amount allocation in the CFUGs monitored in the year 2008 as compared to the year 2007. The allocation of fund was 19 percent in the years 2007 and it was only six percent in the year 2008. The budget was allocated by CFUGs for different income-generating activities and relief

<sup>14</sup> GPSE 2007; Monitoring Gender, Poverty and Social Equity (GPSE) in Natural Resource Management: A Pilot Initiative of the GPSE Learning Group and the Gender Equity Working Group of the MoFSC, IUCN, Nepal

<sup>15</sup> See Monitoring forms for detail information.

support to their P&E CFUG members. Ten out of twenty-one (48%) CFUGs have allocated some fund for pro-poor activities. Looking at the data VDC wise, CFUGs of Gadsera and Nirauli have not allocated such fund due to lack of available fund (Annex 5). Although this analysis showed that there was a need for increasing the amount of budget with definitive programs for the substantial contribution in poverty reduction but it may not be practical as the analysis was based on the data of just a gap of one year. Therefore, in the year 2008 there may not be necessary to allocated more fund to the P&E groups in comparison to the year 2007.

**Table 2: Allocation of fund to Pro-Poor**

## Conclusion

GPSE work has been promoting access and benefit sharing through policy promotion. The impacts can be seen by the increase in the access to distributed forest resources irrespective of class or caste. The percent of P&E receiving at least the average share of distributed forest resources (fuelwood, thatch grass, grass, fodder, timber, leaf litter, and medicinal plants) had also increased. Now, the equitable distribution of resources is gaining momentum as the equitable distribution of resources does not simply mean that everyone receives an equal share of forest products.

There is a need to distribute the forest resources in a sustainable manner as well as in accordance to the requirements of different HHs. In fact, sustainable forest management is probably not possible if everyone is entitled to an equal share. Rather, equity refers to the process by which distribution decisions are made as well as distribution of resources are made to alleviate poverty within the

There was also increased representation of P&E in EC and key positions and this also ensures equitable governance. As the study showed that there is still dominance of elite groups, there is a need for capacity building of key position holders to take up the required responsibilities and tasks.

There is also a need to raise voice of women as well as P&E in the meetings by their representatives and assist in equity-sensitive decisions in the days to come. This will help to reduce elite dominance in CF.

There were provisions for allocation of pro-poor fund in some of the CFUGs. These funds were being utilized in livelihood improvement through income-generating activities (IGAs). It is necessary to focus on involving men in such IGAs which will help reduce the male migration rate and also help women to lessen their workload. This will definitely give an opportunity for women to come out from their household chores and could take part in different community activities, strengthen their ability and broaden their knowledge. This is also very essential for achieving the goals set for livelihood improvement and poverty reduction through gender and social equity. There is a need to focus on a collaborative/cooperative effort of different groups to get a significant reduction in poverty.

More equity-sensitive organizational development could be achieved by giving employment opportunities to qualified P&E members. Equity-sensitive issues were also adopted in policies such as in constitutions, operational plans and strategic decisions. This was due to sensitization and awareness towards gender and social equity issues in the recent years. There was increasing realization towards the need of active participation of marginalized and disadvantaged groups in planning, implementation and monitoring in CFUG activities from all stakeholders.

Year	No of CFUGs.	Fund amount (%)
2007 avg	10	19
2008 avg	11	6

Source: GPSE Monitoring 2007 & 2008

## References

- GPSE .2007. Monitoring Gender, Poverty and Social Equity (GPSE) in Natural Resource Management: A Pilot Initiative of the GPSE Learning Group and the Gender Equity Working Group of the MoFSC, IUCN Nepal, Kathmandu.
- IUCN .2008. Assessment Report of Gender, Poverty and Social Equity (GPSE) Monitoring of 20 CFUGs of Project Working Area, “Practical Innovations for Inclusive Conservation & Sustainable Livelihoods Project – Benefit Sharing Component, MAPs & NTFPs Program”, Budar, Doti.

## Annexes

**Annex 1: Socio-economic Information of Monitored CFUGs in Doti District**

SN	Name of CFUG	VDC	VDC/Ward	Monitored Year	Total HHs	Social Structure				PE HHs out of CFUG within area covered by CFUG	
						Poor HH (%)	Socially Excluded HH (%)	Female-headed HH (%)	P&E HH (%)	Left HHs	Left PE HH (%)
1	Baseni	Chhatiwan	Chha-5 & Lax-6	2007	63	37	73	11	73	1	2
2	Bhogwati (A)*	Nirauli	Ni-4	2007	61	59	7	7	59	-	0
3	Gaurisankar	Gadsera	Gad-3,4,5 & Ni-9	2007	177	47	12	4	53	-	0
4	Ghanteshwor	Ghanteshwor	Gha-1	2007	122	63	40	5	66	3	3
5	Kaphalada-Raniban	Ghanteshwor	Gha-8	2007	36	28	22	3	31	-	0
6	Kedareshwor	Laxminagar	Lax-9	2007	25	64	20	8	68	-	0
7	Laligurans	Laxminagar	Lax-4,5, 6	2007	200	71	54	2	73	-	0
8	Malika-Kedareshwor	Gadsera	Gad-7,8, 9	2007	140	62	19	6	64	-	0
9	Raniban (A)	Ghanteshwor	Gha-2,3	2007	126	40	33	10	46	2	2
10	Ranipokhari	Chhatiwan	Chha-4	2007	37	60	49	22	65	6	9
11	Bhagawoti(B)**	Nirauli	Ni-5, 6	2008	56	47	4	5	46	-	0
12	Bhageswor	Chhatiwan	Chha-8	2008	58	54	17	5	57	4	11
13	Dilasaini	Chhatiwan	Chha-1	2008	236	60	41	11	67	11	6
14	Durgadevi	Chhatiwan	Chha-7	2008	60	57	33	3	63	-	0
15	Kafalkatte	Chhatiwan	Chha-3	2008	22	50	41	5	59	-	0
16	Malika	Laxminagar	Lax-8	2008	48	71	38	0	71	-	0
17	Malika-Janjagruti	Nirauli	Ni-7 & 8	2008	104	62	15	7	67	-	0
18	Nabadurga	Chhatiwan	Chha-8	2008	63	83	70	11	89	-	0
19	Parsuram	Chhatiwan	Chha-9	2008	53	51	89	11	100	-	0
20	Tribeni	Chhatiwan	Chha-5	2008	50	76	50	0	76	-	0
21	Raniban (B)**	Chhatiwan	Chha-2	2008	136	70	61	2	86	3	2

Source: GPSE monitoring 2007 & 2008; \* Nirauli-4; \*\* Nirauli-5, 6; ' Ghanteshwor 2, 3; " Chhattiwan-2; Chha - Chhatiwan; Gha - Ghanteshwor; Lax - Laxminagar; Gad - Gadsera; & Ni - Nirauli

**Annex 2: Percent of P&E Receiving at Least Average Share of Forest Resources**

SN	Name of CFUG	Percentage (%)					
		Fuel wood	Thatch Grass	Grass	Leaf Litter	Timber	Medicinal Herbs
1	Baseni	53	49	49	44	0	18
2	Bhogwati (A)*	34	38	25	44	13	0
3	Gaurisankar	27	22	27	16	18	0
4	Ghanteshwor	46	54	55	44	8	0
5	Kaphalada-Raniban	46	18	46	32	0	59
6	Kedareshwor	70	83	65	0	0	0
7	Laligurans	47	41	54	56	0	0
8	Malika-Kedareshwor	34	14	28	19	14	0
9	Raniban (A)'	60	38	52	28	7	0
10	Ranipokhari	33	42	37	23	0	0
11	Bhagawoti(B)**	69	73	54	62	50	0
12	Bhageswor	51	21	21	29	9	0
13	Dilasaini	53	46	34	43	6	0
14	Durgadevi	55	32	45	45	13	69
15	Kafalkatte	39	31	54	31	0	74
16	Malika	44	68	65	62	65	0
17	Malika-Janjagriti	53	44	43	69	13	0
18	Nabadurga	63	32	39	33	8	0
19	Parsuram	63	40	60	30	21	29
20	Tribeni	66	68	66	0	0	27
21	Raniban (B)''	50	53	47	50	2	0

Source: GPSE monitoring 2007 & 2008

### Annex 3: Representatio of Women, Poor and Socially Excluded in EC

SN	Name of CFUG	Representation in EC (%)			Representation in Key Position of CFUG EC (%)	
		P&E	Women	P&E (women)	P&E	Women
1	Baseni	93	23	23	100	0
2	Bhogwati(A)*	73	27	27	67	0
3	Gaurisankar	58	29	30	0	0
4	Ghanteshwor	78	33	33	33	0
5	Kaphalada-Raniban	27	18	18	0	0
6	Kedareshwor	64	37	37	33	0
7	Laligurans	85	23	23	33	0
8	Malika-Kedareshwor	15	8	8	0	0
9	Raniban (A)'	45	33	33	0	0
10	Ranipokhari	82	64	64	33	33
11	Bhagawoti(B)**	55	45	27	33	0
12	Bhageswor	64	36	36	67	0
13	Dilasaini	53	40	40	0	0
14	Durgadevi	64	36	36	0	0
15	Kafalkatte	73	27	28	33	0
16	Malika	85	31	31	33	0
17	Malika-Janjagriti	64	27	27	33	0
18	Nabadurga	85	31	31	67	0
19	Parsuram	100	22	22	100	33
20	Tribeni	77	31	31	33	0
21	Raniban (B)''	91	55	55	67	33

Source: GPSE monitoring 2007 & 2008

**Annex 4: Equity-sensitive policy/work plan and P&E responses to decisions**

SN	Name of CFUG	Equity-sensitive Policy/WP	Equitable Decision		
			Total Respondent	P&E Respondent	Decisions made are Good and Very Good (%)
1	Baseni	Yes	39	12	92
2	Bhogwati(A)*	Yes	21	3	100
3	Gaurisankar	Yes	25	6	100
4	Ghanteshwor	Yes	73	23	100
5	Kaphalada-Raniban	Yes	24	4	75
6	Kedareshwor	Yes	15	0	0
7	Laligurans	Yes	25	12	92
8	Malika-Kedareshwor	Yes	21	5	75
9	Raniban (A)'	Yes	86	28	64
10	Ranipokhari	Yes	31	19	47
11	Bhagawoti(B)**	Yes	18	0	0
12	Bhageswor	Yes	44	10	30
13	Dilasaini	Yes	153	53	44
14	Durgadevi	Yes	25	8	13
15	Kafalkatte	Yes	17	5	40
16	Malika	Yes	29	9	89
17	Malika-Janjagriti	Yes	25	6	66
18	Nabadurga	Yes	49	31	26
19	Parsuram	No	23	13	77
20	Tribeni	Yes	15	8	100
21	Raniban (B)''	Yes	85	36	50

Source: GPSE monitoring 2007 & 2008

### Annex 5: Allocation of Pro-Poor Fund

SN	Name of CFUG	Pro-Poor Fund Allocation	
		Pro-Poor Fund	Fund Amount (%)
1	Baseni	Yes	17
2	Bhogwati(A)*	No	0
3	Gaurisankar	No	0
4	Ghanteshwor	Yes	4
5	Kaphalada-Raniban	Yes	41
6	Kedareshwor	No	0
7	Laligurans	Yes	15
8	Malika-Kedareshwor	No	0
9	Raniban (A)'	Yes	86
10	Ranipokhari	Yes	31
11	Bhagawoti(B)**	No	0
12	Bhageswor	Yes	15
13	Dilasaini	Yes	29
14	Durgadevi	No	0
15	Kafalkatte	No	0
16	Malika	No	0
17	Malika-Janjagriti	No	0
18	Nabadurga	Yes	11
19	Parsuram	No	0
20	Tribeni	No	0
21	Raniban (B)''	Yes	3

Source: GPSE monitoring 2007 & 2008



IUCN Nepal  
P.O. Box 3923  
Kathmandu, Nepal  
Email: [info-np@iucn.org](mailto:info-np@iucn.org)  
URL: [www.iucnnepal.org](http://www.iucnnepal.org)